

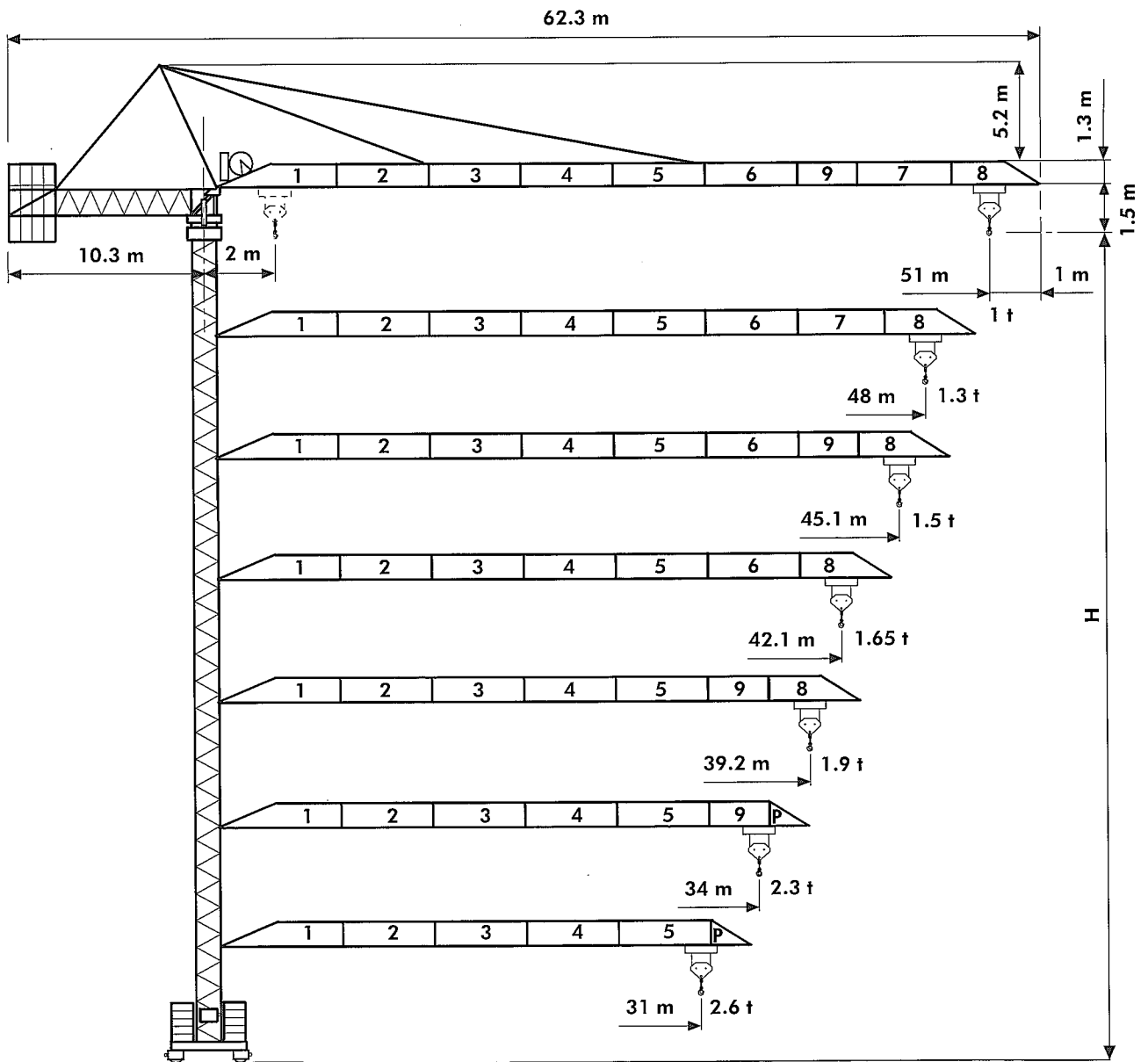


Gru "City"

"City" Crane • Grue "City"

"City" Kran • Grua "City"

GTS 511/A



CE DIN 15018 H1 B3

simple, available and cost effective™

Diagramma di portata
Load Diagram

I
GB

Curbes de charges
Lastkurven

F
D

Curvas de cargas

E

GTS 511/A 10-30

| Q | Diagramma | m | 10 | 13 | 15 | 18 | 20 | 23 | 25 | 28 | 31 | 34 | 36 | 39.2 | 42.1 | 45.1 | 48 | 51 |
|-----|-----------|---|----|----|----|----|----|------|------|------|------|------|------|------|------|------|------|----|
| 3 t | - 20.6 m | t | 3 | 3 | 3 | 3 | 3 | 2,66 | 2,41 | 2,12 | 1,88 | 1,68 | 1,57 | 1,41 | 1,29 | 1,18 | 1,09 | 1 |
| 3 t | - 23.5 m | t | 3 | 3 | 3 | 3 | 3 | 3 | 2,83 | 2,49 | 2,21 | 1,98 | 1,85 | 1,67 | 1,53 | 1,41 | 1,30 | |
| 3 t | - 24.9 m | t | 3 | 3 | 3 | 3 | 3 | 3 | 3 | 2,64 | 2,35 | 2,11 | 1,97 | 1,78 | 1,63 | 1,50 | | |
| 3 t | - 25 m | t | 3 | 3 | 3 | 3 | 3 | 3 | 3 | 2,66 | 2,37 | 2,13 | 1,99 | 1,80 | 1,65 | | | |
| 3 t | - 26.3 m | t | 3 | 3 | 3 | 3 | 3 | 3 | 3 | 2,80 | 2,50 | 2,25 | 2,10 | 1,90 | | | | |
| 3 t | - 26.9 m | t | 3 | 3 | 3 | 3 | 3 | 3 | 3 | 2,87 | 2,56 | 2,30 | | | | | | |
| 3 t | - 27.1 m | t | 3 | 3 | 3 | 3 | 3 | 3 | 3 | 2,92 | 2,60 | | | | | | | |

GTS 511/A 10-60

| Q | Diagramma | m | 10 | 13 | 15 | 18 | 20 | 23 | 25 | 28 | 31 | 34 | 36 | 39.2 | 42.1 | 45.1 | 48 | 51 |
|-----|-----------|---|----|------|------|------|------|------|------|------|------|------|------|------|------|------|------|------|
| 3 t | - 20.3 m | t | 3 | 3 | 3 | 3 | 3 | 2,62 | 2,38 | 2,09 | 1,86 | 1,67 | 1,55 | 1,40 | 1,28 | 1,17 | 1,08 | 1 |
| 6 t | - 10.2 m | t | 6 | 4,61 | 3,91 | 3,16 | 2,78 | 2,34 | 2,10 | 1,81 | 1,58 | 1,39 | 1,27 | 1,12 | 1 | 0,89 | 0,80 | 0,72 |
| 3 t | - 23.5 m | t | 3 | 3 | 3 | 3 | 3 | 3 | 2,80 | 2,46 | 2,19 | 1,97 | 1,84 | 1,67 | 1,53 | 1,41 | 1,30 | |
| 6 t | - 11.8 m | t | 6 | 5,41 | 4,61 | 3,74 | 3,30 | 2,79 | 2,52 | 2,18 | 1,91 | 1,69 | 1,56 | 1,39 | 1,25 | 1,13 | 1,02 | |
| 3 t | - 24.7 m | t | 3 | 3 | 3 | 3 | 3 | 3 | 2,97 | 2,62 | 2,33 | 2,10 | 1,96 | 1,78 | 1,63 | 1,50 | | |
| 6 t | - 12.4 m | t | 6 | 5,74 | 4,89 | 3,98 | 3,52 | 2,98 | 2,69 | 2,34 | 2,05 | 1,82 | 1,68 | 1,50 | 1,35 | 1,22 | | |
| 3 t | - 25 m | t | 3 | 3 | 3 | 3 | 3 | 3 | 3 | 2,65 | 2,36 | 2,12 | 1,99 | 1,80 | 1,65 | | | |
| 6 t | - 12.6 m | t | 6 | 5,80 | 4,95 | 4,02 | 3,56 | 3,01 | 2,72 | 2,37 | 2,08 | 1,84 | 1,71 | 1,52 | 1,37 | | | |
| 3 t | - 26.2 m | t | 3 | 3 | 3 | 3 | 3 | 3 | 3 | 2,79 | 2,49 | 2,24 | 2,10 | 1,90 | | | | |
| 6 t | - 13.2 m | t | 6 | 6 | 5,22 | 4,25 | 3,76 | 3,19 | 2,89 | 2,51 | 2,21 | 1,96 | 1,82 | 1,62 | | | | |
| 3 t | - 26.6 m | t | 3 | 3 | 3 | 3 | 3 | 3 | 3 | 2,86 | 2,56 | 2,30 | | | | | | |
| 6 t | - 13.5 m | t | 6 | 6 | 5,35 | 4,36 | 3,86 | 3,28 | 2,97 | 2,58 | 2,28 | 2,02 | | | | | | |
| 3 t | - 27.3 m | t | 3 | 3 | 3 | 3 | 3 | 3 | 3 | 2,91 | 2,60 | | | | | | | |
| 6 t | - 13.7 m | t | 6 | 6 | 5,45 | 4,44 | 3,93 | 3,34 | 3,02 | 2,63 | 2,32 | | | | | | | |

Altre installazioni
Other configurations

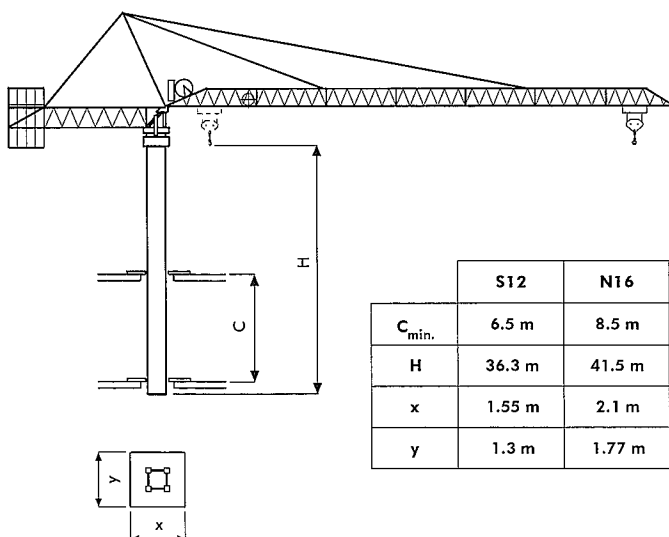
I
GB

Autres implantations
Aufstellmöglichkeiten

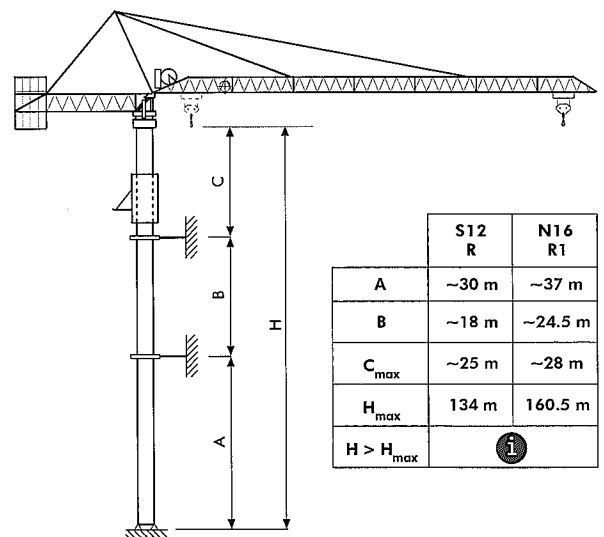
F
D

Otras implantaciones

E



i



i Consultateci
C Distanza fra i collari

I Consult us
Distance between collars

GB Nous consulter
Distance entre cadres

F Consultarnos
Distancia entre marcos

E Auf Anfrage
Abstand zwischen den Rahmen

D

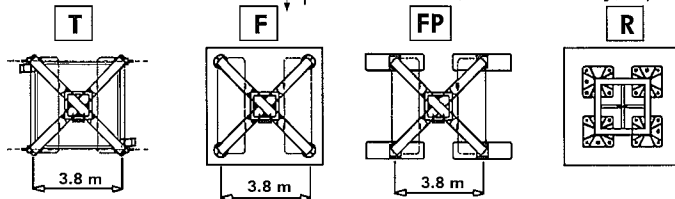
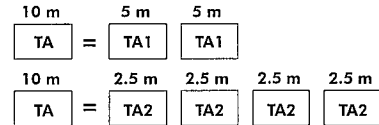
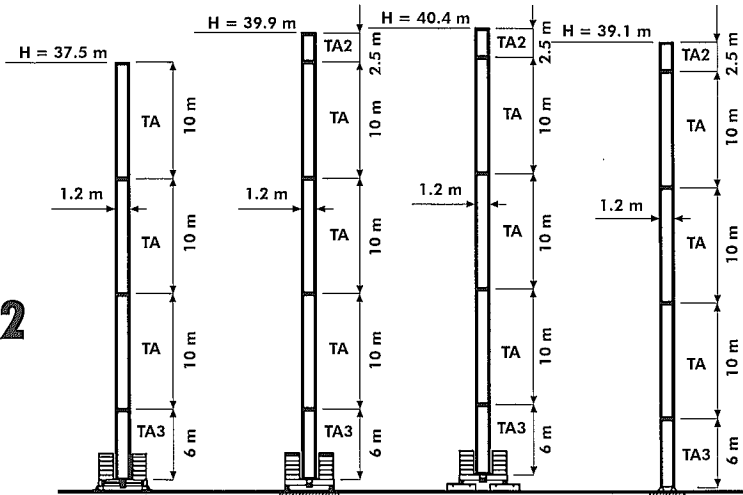
COMEDIL GTS 511/A

Torre Mast **I**
GB

Mat Turm **F**
D

Mástil **E**

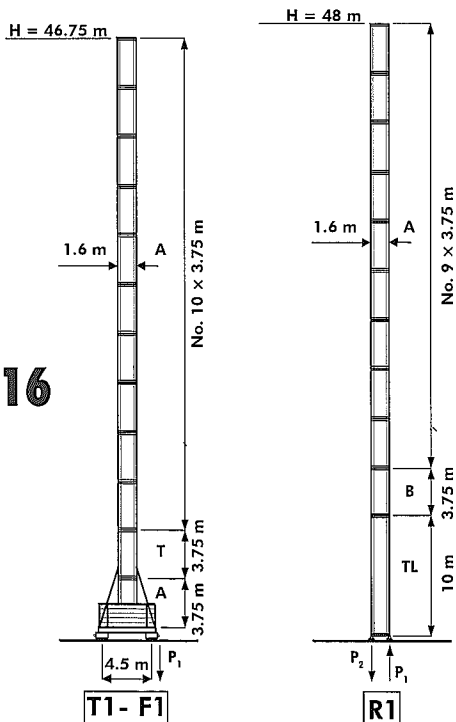
S12



| | | |
|-------|----------|-----------|
| P_1 | 866 kN ● | 1142 kN ◄ |
| P_2 | 658 kN ● | 945 kN ◄ |
| | 22.8 t | |

| | | |
|-------|----------|----------|
| P_1 | 498 kN ● | 527 kN ◄ |
| | 26.8 t | |
| P_1 | 505 kN ● | 578 kN ◄ |
| | 26.8 t | |
| P_1 | 515 kN ● | 592 kN ◄ |
| | 26.3 t | |

N16



| | | | | |
|---|---|-----------|--|----------|
| H | Altezza massima sotto gancio | I | Höchste Hackenhöhe | D |
| ● | In servizio | | In Betrieb | |
| ◄ | F fuori servizio | | Außer Betrieb | |
| ⊕ | A vuoto, senza zavorra, braccio max., altezza max. | | Ohne Last und Ballast, mit Maximalausleger und Maximalhöhe | |
| H | Max. under hook height | GB | Maxima altura bajo gancio | E |
| ● | In service | | En servicio | |
| ◄ | Out of service | | Fuera de servicio | |
| ⊕ | Without load, without ballast, max. jib and max. height | | Sin carga, sin lastre, con pluma y altura máxima | |
| H | Hauteur maxi. sous crochet | F | | |
| ● | En service | | | |
| ◄ | Hors service | | | |
| ⊕ | A vide, sans lest, avec flèche et hauteur maximum | | | |

| | | |
|-------|----------|-----------|
| P_1 | 667 kN ● | 726 kN ◄ |
| | 31.3 t | |
| P_1 | 942 kN ● | 1275 kN ◄ |
| P_2 | 785 kN ● | 1079 kN ◄ |
| | 27.3 t | |

COMEDIL GTS 511/A

Meccanismi
Mechanisms

I
GB

Mécanismes
Antriebe

F
D

Mecanismos

E

| | | kVA | | |
|--|-------------|------|-------------------------------|-----------|
| | 20 AG 30 HB | 35 * | 400 V - 50 Hz | CE 87/405 |
| | 25 AG 30 HB | 40 * | 400 V - 50 Hz / 460 V - 60 Hz | |

* Gru senza traslazione / Crane without travelling equipment / Grue sans translation / Krane ohne Schienenfahren / Grúa sin traslación

| | | | m/min | | t | kW | |
|------------------------|--|--|-------|-----|------|--------------------------------|--|
| | | | | | | | |
| 20 AG 30 HB (50 Hz) | | | 6 | 3 | 15 | 196 m | |
| | | | 26 | 3 | | | |
| | | | 52 | 1.5 | | | |
| | | | 3 | 6 | | | |
| | | | 13 | 6 | | | |
| | | | 26 | 3 | | | |
| 25 AG 30 HB | | | 7 | 3 | 17.5 | 241 m (50 Hz) 196 m (60 Hz) | |
| | | | 32 | 3 | | | |
| | | | 63 | 1.5 | | | |
| | | | 3.5 | 6 | | | |
| | | | 16 | 6 | | | |
| | | | 31.5 | 3 | | | |

| | | | | |
|----------|----------------|--------------------|------------------|------------|
| | DAD 2 2 | 0-23-46 m/min | 1.1 - 2.2 kW | |
| i | | DSR 3 50 | 0-10-30-60 m/min | 50 - 40 Nm |
| | | SSR 11 50 | 0-0.8 r.p.m. | 50 Nm |
| | | TAD 2 P 1 3 | 0-24 m/min | 2 x 3 kW |
| | | R > 12 m | i | |

| i | |
|-----------|----------------------------------|
| I | Argani a variazione di frequenza |
| GB | Variable frequency winches |
| F | Treuil à variation de fréquence |
| D | Ubwinde mit Frequenzänderung |
| E | Variación de frecuencia |

Sollevamento
 Traslazione carrello
 Rotazione
 Traslazione
 Direttiva sul livello acustico
 Consultateci

I

Levage
Distribution
Orientation
Translation
Directive sur le niveau acoustique
Nous consulter

F

Elevación
Distribución
Orientación
Traslación
Directiva sobre el nivel acustico
Consultarnos

E

Hoisting
 Trolleying
 Slewing
 Travelling
 Directive on noise level
 Consult us

GB

Heben
Katzfahren
Schwenken
Schienenfahren
Richtlinie für den Schall-Leistungspegel
Auf Anfrage

D