




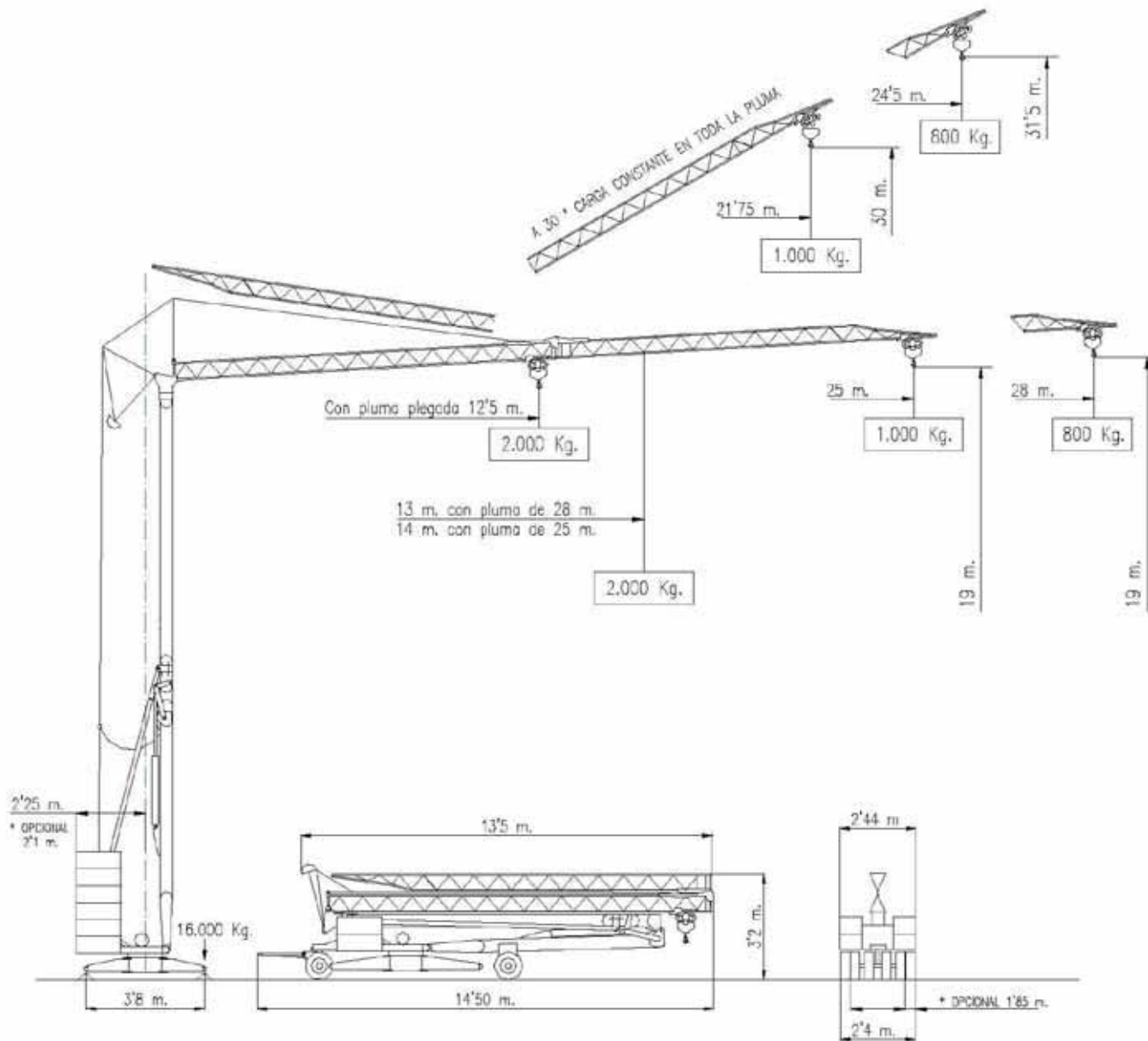


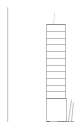
H-19-28 SR / 2T



-  Grúa hidráulica
-  Crane hydraulic
-  Hydraulischer kran
-  Grue hydraulique
-  Gru hidráulica



PESO / Weight / Gewicht / Poids / Peso



12 x 1100 Kg

13 200 Kg








11 000 Kg



DIN 15018







MECANISMOS / Mechanisms / Antriebe / Mécanismes / Meccanismi

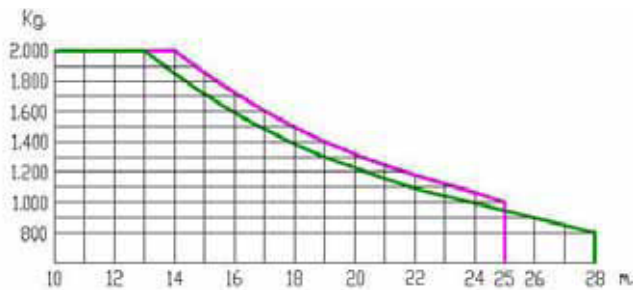
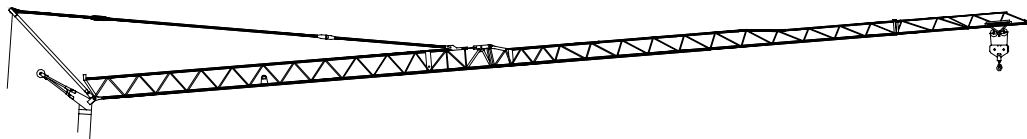
				
	m/min	0-4	0-19	0-38
	Kg	2000	2000	1000
	Kw	7'5		
	m/min	18'5		37
	Kg	2000		2000
	Kw	0'75		1'5
	r.p.m	0'25	0'5	0'8
	N.m	30		
	Kw	3		

ALIMENTACION ELECTRICA Mains supply Netzstrom Réseau électrique Alimentazione elettrica	400 V 50 Hz
---	----------------

POTENCIA ELECTRICA NECESARIA Power requirement Anschlusswert Puissance électrique nécessaire Potenza elettrica necessaria	13 Kw
---	-------

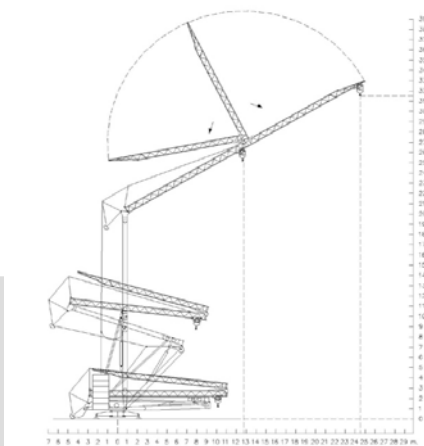
-  Elevación / Hoisting / Heben / Levage / Sollevamento
-  Distribución / Trolleying / Katzfahren / Distribution / Distributions
-  Orientación / Slewing / Schwenken / Orientation / Rotazione
-  Montaje / Erection / Montage / Montaggio

DIAGRAMAS DE CARGA / Loads diagrams / Lastkurven / Courbes de charges / Diagrammi di carico



MONTAJE / Erection / Montage / Montaggio

PLUMA INCLINADA 30°



PLUMA HORIZONTAL

